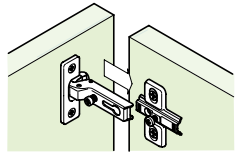
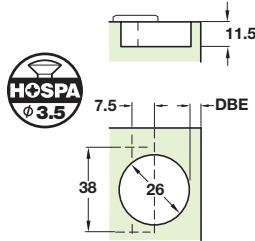


# Concealed Hinges

## Essentials Standard 26 92° Hinges with Keyhole Arms

- Opening angle **92°**
- 0 mm, 9 mm or 15 mm crank
- Sprung
- Ø 26 mm cup
- Screw fixing cup
- Keyhole fixing arm
- Nickel-plated pressed steel cup and arm
- **Mounting plates** for keyhole system hinges are shown on page 37

### Screw fixing



**92°**

### Keyhole

Crank	Screw fixing
0	317.01.505
9	317.01.514
15	317.01.523

Order qty: Multiples of 20 pcs

### Mounting screws

- Hospa chipboard screws, raised head, Ø 3.5 mm with cross slots
- Nickel plated steel

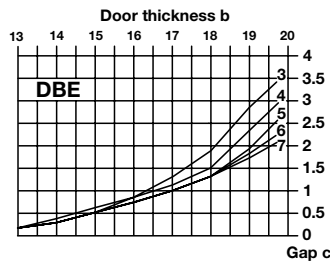
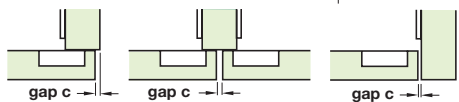
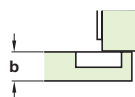
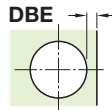


Length	Cat. No.	Order qty
15 mm	015.55.639	1000
17 mm	015.55.648	1000
20 mm	015.55.657	1000

6

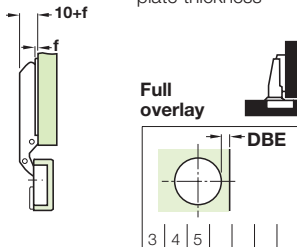
Hinges

- DBE** = Distance of the bore from the edge of the door
- b** = Thickness of the door
- c** = Required gap
- e** = Coverage of the side (end) by door
- f** = Mounting plate thickness



### 0 Crank

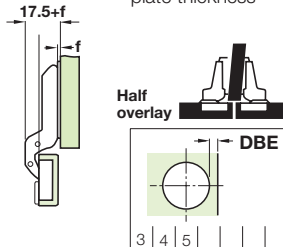
f = Mounting plate thickness



e	DBE				
	3	4	5		
19					
18					
17					
16			2		
15	2		2		
14	2		5		
13	5				
12	5				

### 9 Crank

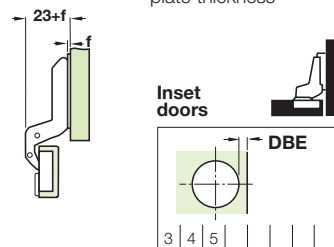
f = Mounting plate thickness



e	DBE				
	3	4	5		
10					
9					
8					
7			2		
6	2		2		
5	2		5		
4	5				
3	5				

### 15 Crank

f = Mounting plate thickness



gap c	DBE				
	3	4	5		
0.5					
1.5			5		
2.5	5		5		
3.5					
4.5					