

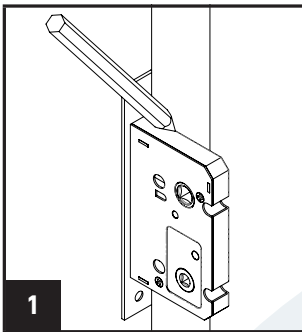
MORTICE LOCK INSTALLATION GUIDE



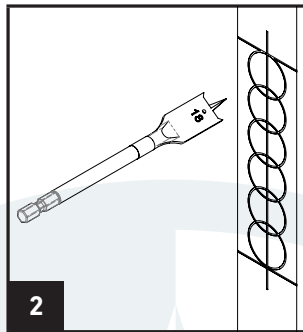
Incorrectly installing this product will negatively impact function and lifespan. If you are unsure please contact a professional. Drawings not to scale unless otherwise specified.

Do not drill into the door whilst the product is installed.

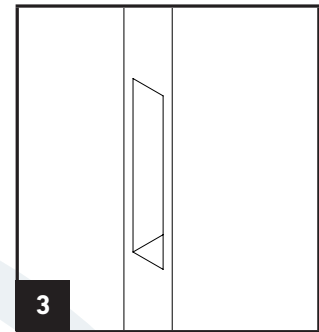
Preparation & Installation



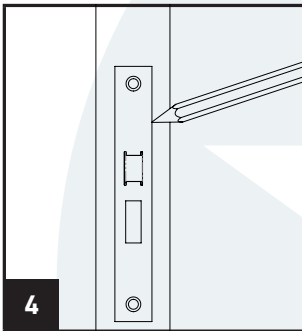
1. Position the lock body at the required height against the door edge. Using a pencil, mark the top and bottom of the lock on the door edge as illustrated above.



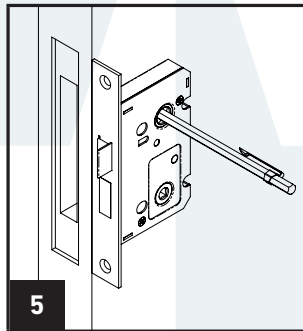
2. Between the lines for top and bottom of lock, mark a vertical guideline central to the door edge, to use as a guide for a series of holes to be drilled to the required depth.



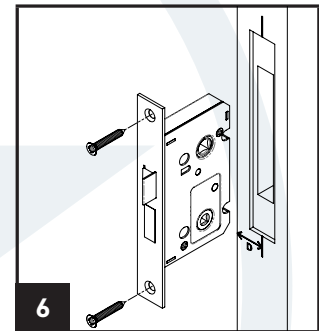
3. Chisel out the remaining wood to provide clearance for the lock body. The mortice should be smooth and any shavings or swarf must be removed.



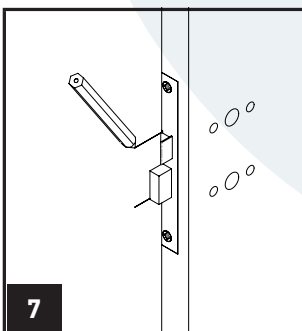
4. Insert the lock body into the morticed hole and mark around the faceplate. Remove the lock from door and chisel out a recess to accept the depth of forend. Ensure any swarf is removed from mortice.



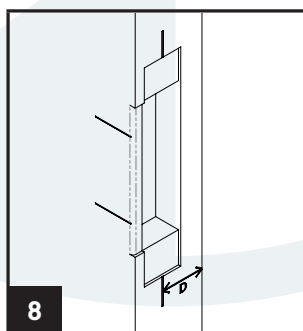
5. As per Fig 1. Place the lock body against the door face, and in line with the lock mortice, make allowance for the forend and faceplate. Mark through the centre of the positions for any Keyway/Cylinder and spindle follower. Mark and drill both sides of the door as needed. Drill any additional holes for fixings if required.



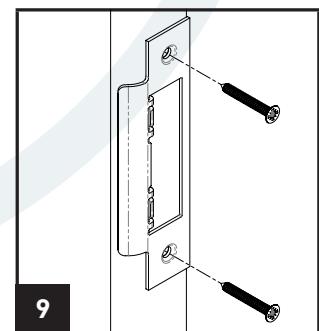
6. Ensure the mortice is free of any swarf and insert the lock into the mortice. Pre drill the forend fixing holes for screws and secure the lock in place. Check that the Key/Cylinder and Spindle fit within prepared holes and that they operate the lock correctly. Test the final fitting to ensure the latch and/or deadbolt operate correctly.



7. When lock is fitted, with door in the open position, turn the key to fully throw the deadbolt to "locked position". Gently close the door against the frame and mark on the door frame, the top edge of the latchbolt and the bottom edge of the deadbolt.



8. Continue these marks to the inside edge of the door frame rebate. Mark an additional horizontal line approx. 2mm above the top line, this line represents the top inside edge of the aperture within the striker. Measure distance (D) from door edge to centre of lock (see Fig.6).



9. Transfer this dimension to door frame. With the final position established, mark around the dustbox & striker, drill & cut using the same method as for the lock case and forend.

NOTE - These fitting instructions are for all mortice locks and latches. If fitting to fire door, allow for intumescent material. Illustrations show sashlocks but same preparation and installation method is applicable to deadlocks and latches.

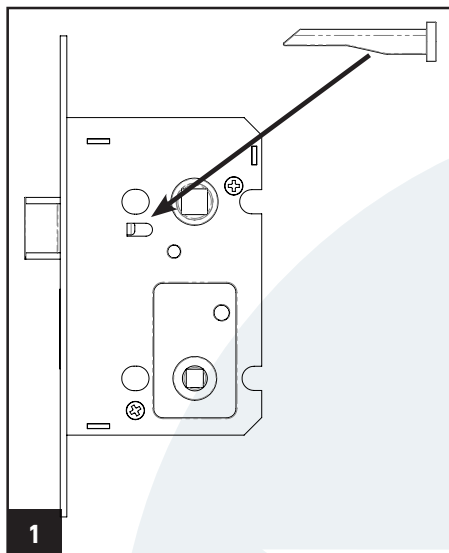
Drawings not to scale unless otherwise specified.



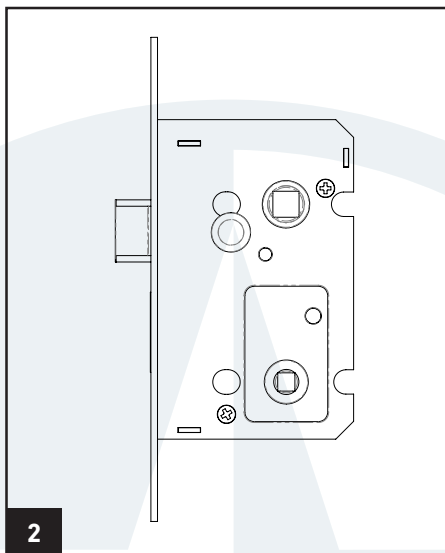
Incorrectly installing this product will negatively impact function and lifespan. If you are unsure please contact a professional. Drawings not to scale unless otherwise specified.

Do not drill into the door whilst the product is installed.

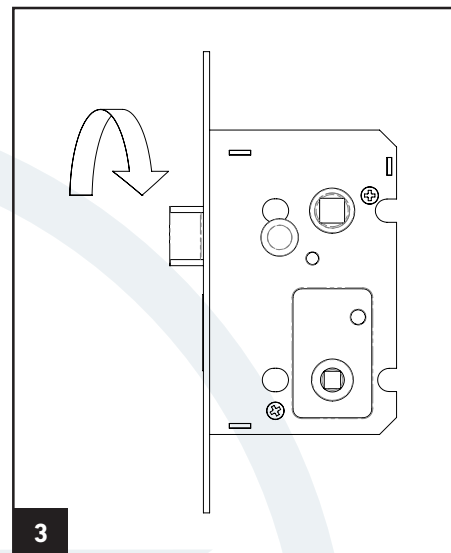
Reversing Latch Bolt (Do Not Open Lock Case)



1 Insert the 'Easi-T' tool, ensuring rounded profile of tool matches the profile of the hole in the case.



2 Push the 'Easi-T' tool fully into the hole.



3 Turn latch to reverse and the remove tool.

Care & Maintenance




A Care and Maintenance Schedule should be carried out regularly.



Check that the lock and the strike plate are correctly aligned and that the fixing screws are tight.

If lubrication is required, apply PTFE lubricant (or similar) to the latchbolt and deadbolt slots, operate a few times to work the lubricant into the components, wiping away any excess. Ensure that any door or frame finishes are protected.

MORTICE LOCK INSTALLATION GUIDE



<div> 2821-CPR-XXXX</div>		<div> 0843-CPR-XXXX</div>		<div> UL-EU-XXXX-EN</div>	Code	Description	Carlisle Brass Ltd., Parkhouse Road, Carlisle, Cumbria, CA3 0JU												
EN 12209:2003/AC 2005																			
0315	25	1404	25	UL-EU-01342-EN	ESBL5025	64mm Sashlock - Euro	2	M	8	1	0	F	2	B	A	2	0		
					ESBL5030	76mm Sashlock - Euro	2	M	8	1	0	F	2	B	A	2	0		
					LSB5525	64mm BS Sashlock - 5 Lever	2	M	8	1	0	F	7	K	D	2	B		
					LSB5530	76mm BS Sashlock - 5 Lever	2	M	8	1	0	F	7	K	D	2	B		
0314	25	1403	25		EDBL5025	64mm Deadlock - Euro	2	M	8	1	0	F	2	B	A	0	0		
					EDBL5030	76mm Deadlock - Euro	2	M	8	1	0	F	2	B	A	0	0		
					LDB5525	64mm BS Deadlock - 5 Lever	2	M	8	1	0	F	7	K	D	0	B		
					LDB5530	76mm BS Deadlock - 5 Lever	2	M	8	1	0	F	7	K	D	0	B		
0318	25	1407	25	UL-EU-01343-EN	EDS5025	64mm Deadlock - Euro	3	M	8	1	0	F	2	B	A	0	0		
					EDS5030	76mm Deadlock - Euro	3	M	8	1	0	F	2	B	A	0	0		
					LDS5325	64mm Deadlock - 3 Lever	3	M	8	1	0	F	2	K	D	0	A		
					LDS5330	76mm Deadlock - 3 Lever	3	M	8	1	0	F	2	K	D	0	A		
					LDS5525	64mm Deadlock - 5 Lever	3	M	8	1	0	F	2	K	D	0	B		
					LDS5530	76mm Deadlock - 5 Lever	3	M	8	1	0	F	2	K	D	0	B		
					LFB1	105mm FB1 Deadlock	2	C	8	1	0	F	-	K	D	0	0		
					LFB2	105mm FB2 Deadlock	2	C	8	1	0	F	-	K	D	0	0		
0317	25	1406	25		BAS5025	64mm Bathroom Lock - 5mm Follower	2	M	8	1	0	F	-	B	G	2	0		
					BAS5030	76mm Bathroom Lock - 5mm Follower	2	M	8	1	0	F	-	B	G	2	0		
					ESS5025	64mm Euro Sashlock -	2	M	8	1	0	F	2	B	A	2	0		
					ESS5030	76mm Euro Sashlock -	2	M	8	1	0	F	2	B	A	2	0		
					FLL5030	76mm Flat Latch	2	M	8	1	0	F	-	B	0	2	0		
					LSS5325	64mm Sashlock - 3 Lever	2	M	8	1	0	F	2	K	D	2	A		
					LSS5330	76mm Sashlock - 3 Lever	2	M	8	1	0	F	2	K	D	2	A		
					LSS5525	64mm Sashlock - 5 Lever	2	M	8	1	0	F	2	K	D	2	B		
					LSS5530	76mm Sashlock - 5 Lever	2	M	8	1	0	F	2	K	D	2	B		
					ULS5025	64mm Upright Latch	2	M	8	1	0	F	-	B	0	2	0		
					ULS5030	76mm Upright Latch	2	M	8	1	0	F	-	B	0	2	0		

 2812-CPR-XXXX		 1121-CPR-XXXX		Code	Description	Carlisle Brass Ltd., Parkhouse Road, Carlisle, Cumbria, CA3 0JU												
EN 12209:2003/AC 2005																		
5161	20	7904	21	EDE5025	64mm Deadlock - Euro	2	H	8	1	0	F	1	B	A	0	0		
				EDE5030	76mm Deadlock - Euro	2	H	8	1	0	F	1	B	A	0	0		
				LDE5325	64mm Deadlock - 3 Lever	2	H	8	1	0	F	1	K	D	0	A		
				LDE5330	76mm Deadlock - 3 Lever	2	H	8	1	0	F	1	K	D	0	A		
5162	20	7905	21	BAE5025	64mm Bathroom Lock - 5mm Follower	2	H	8	1	0	F	-	B	G	2	0		
				BAE5030	76mm Bathroom Lock - 5mm Follower	2	H	8	1	0	F	-	B	G	2	0		
				ESE5025	64mm Sashlock - Euro - 47.5mm c/c	2	H	8	1	0	F	1	B	A	2	0		
				ESE5030	76mm Sashlock - Euro - 47.5mm c/c	2	H	8	1	0	F	1	B	A	2	0		
				LSE5225	64mm Sashlock - 2 Lever - 57mm c/c	2	H	8	1	0	F	1	K	D	2	0		
				LSE5225/REB	64mm Sashlock - 2 Lever - 57mm c/c	2	H	8	1	0	F	1	K	D	2	0		
				LSE5230	76mm Sashlock - 2 Lever - 57mm c/c	2	H	8	1	0	F	1	K	D	2	0		
				LSE5325	64mm Sashlock - 3 Lever - 57mm c/c	2	H	8	1	0	F	1	K	D	2	A		
				LSE5330	76mm Sashlock - 3 Lever - 57mm c/c	2	H	8	1	0	F	1	K	D	2	A		
				ULE5025	64mm Upright Latch - Square	2	H	8	1	0	F	-	B	0	2	0		
				ULE5030	76mm Upright Latch - Square	2	H	8	1	0	F	-	B	0	2	0		