

INSTALLATION INSTRUCTIONS FOR LOCKS ITEM:

52710, 52711, 52730, 52731, 52750, 52751, 52755, 52756, 52760, 52761, 52780, 52781, 52840, 52842, 52844, 52860, 52862, 52864, 52871, 52891.

1) To reverse hand on item 52710, 52711, 52730, 52731, 52750, 52751, 52755, 52756, 52760, 52761, 52840, 52842, 52844, 52860, 52862, 52864.

- Remove faceplate by undoing the 3 fixing screws.
- Turn latch by 180° (in case of automatic dead bolt 52840, 52860, also rotate the piston by 180°).
- Replace faceplate and tighten the 3 fixing screws.
- Test latch function.

N.B.:

- For a correct operation of the dead locking pin the distance between the faceplate and the door post shall be Max. 5 mm except for the locks with automatic dead bolts item 52840, 52860 whose distance should be Max. 6 mm (fig. 2)
- For a correct operation of the latch, the dimensions of the space under the striker have to be those shown on fig. 2.

2) To select panic function side on item 52844, 52864.

Locks are supplied with panic function operating as shown on fig. 3.

To reverse panic function:

- Activate the deadbolt.
- Unscrew the grub screw on the panic function side.
- Tighten the grub screw into the corresponding hole on the opposite side of the lock.

Fig. 1

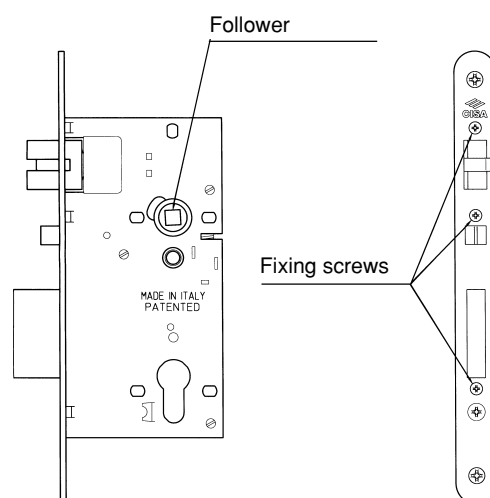


Fig. 2

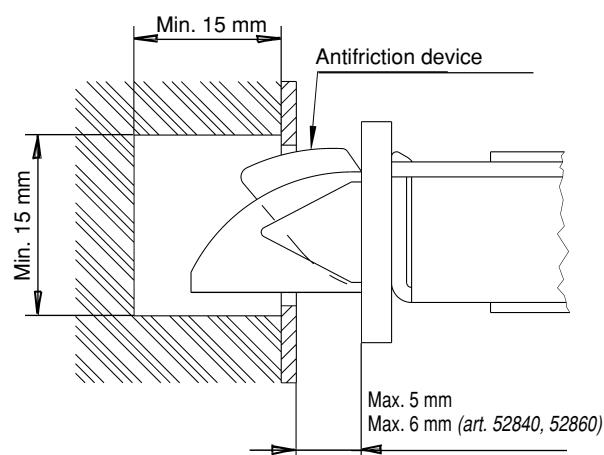
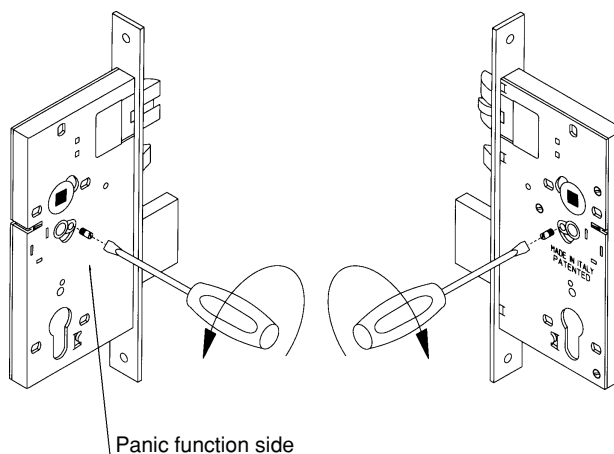


Fig. 3



3) To select panic function side on item 52760, 52761.

Locks are supplied with panic function operating as shown in drawing 4.

To reverse panic function:

- Unscrew the grub screw on the panic function side.
- Tighten the grub screw into the corresponding hole on the opposite side of the lock.

N.B.:

- For a correct operation of panic locks series 52840, 52842, 52844, 52860, 52862, 52864 use only CISA cylinder series 08453***

4) Use of split spindle item 07206-01 on item 52844, 52864, 52760, 52761.

- Insert the two components of the split spindle into split follower.
- Tighten with proper screw.
- Install handle set.

If it is necessary to have more play between the split spindles introduce the spring before tightening the screw, as illustrated in fig. 5

Fig. 4

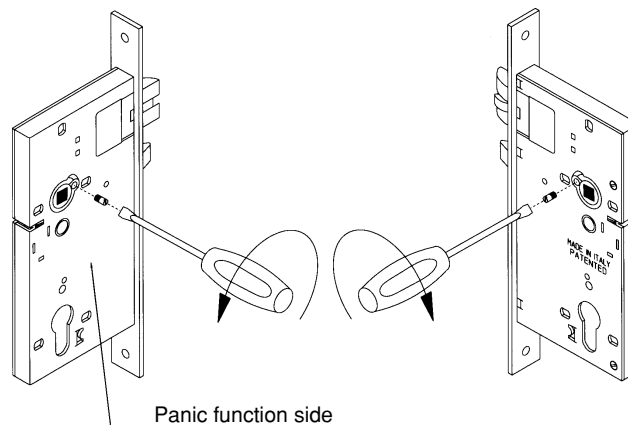
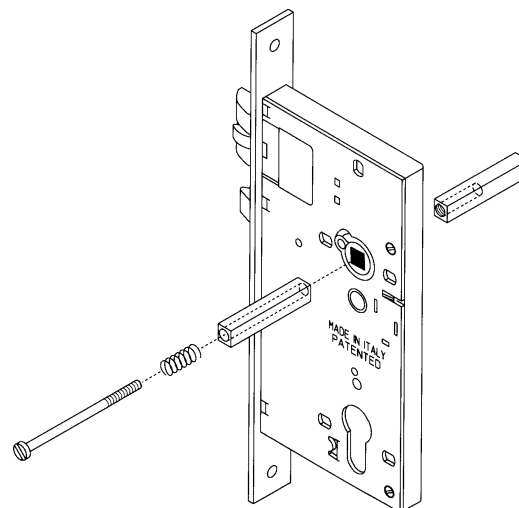


Fig. 5



5) Use of indicator of occupancy, item 06146-00 on item 52842, 52844, 52862, 52864 (fig. 6).

- a) Insert lock into its housing.
- b) Use template supplied to mark position of indicator of occupancy.
- c) Remove lock.
- d) Drill a 16 mm. Ø hole in marked position.
- e) Install lock and cylinder onto door.
- f) Drill hole on handle plate as shown on fig. 7.
- g) Place the plate against the door and check distance **P** (fig. 8):

N.B.

The indicator of occupancy can be used only when "P" is between 14 to 25 mm. when "P" is between 14 to 19 mm the 5 mm spacer must be used (fig. 9).

- h) Install indicator body onto plate and tighten it with its nut.
- i) Screw threaded pin through indicator body.
- j) Install self tapping red cap onto threaded pin.
- k) Make sure that distance **y** or **z** (fig. 9) are maintained:

$$y = P - 8 \text{ mm (without spacer)}$$

$$z = P - 3 \text{ mm (with spacer)}$$

- l) Install plate and handle.
- m) Clip plug into indicator body.

When dead bolt is thrown, indicator should protrude by **3.5 mm**. (fig. 9).
Incorrect installation might cause stiffness on dead bolt.

Indicator of occupancy

Fig. 6

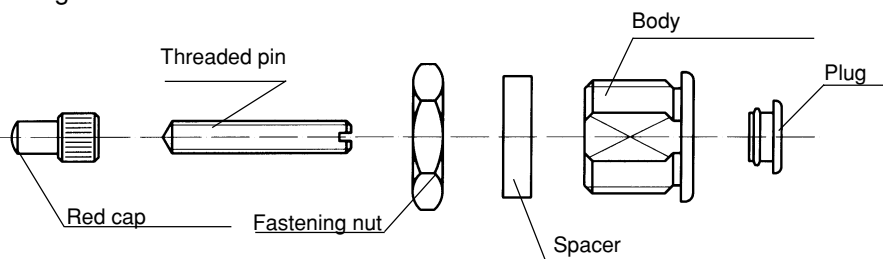


Fig. 7

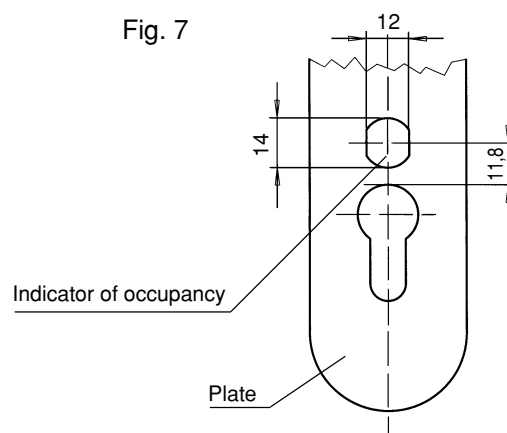


Fig. 8

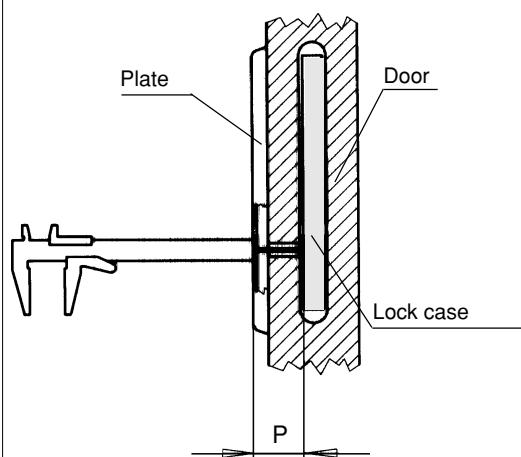
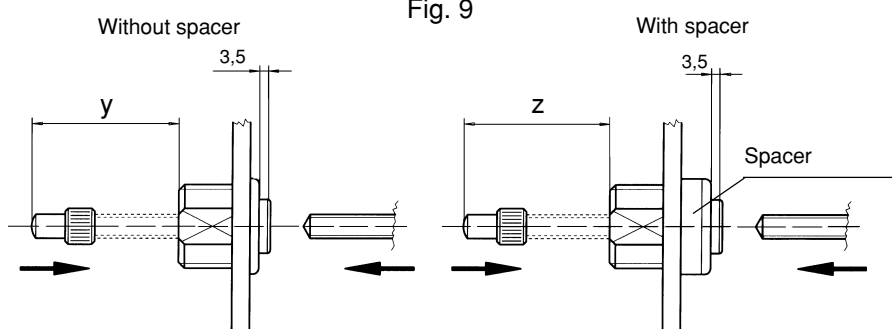



Fig. 9



GB

 LISTED R 14945 certification valid for items 52710, 52711, 52730, 52731, 52750, 52751, 52755, 52756, 52760, 52761, 52840, 52842, 52844, 52860, 52862, 52864, with stainless steel faceplate (fin. 20).

The above certification shall not be valid if a striker is used that is not UL certified. CISA declines any responsibility resulting from the use of striking plates different from those supplied as standard.

Products listed within this catalogue should only be used as specified.
For applications other than those shown, advice should be sought from CISA's authorized distributor or company.
CISA S.p.A. reserves the right to modify product specifications without prior notice.

HI - SPECIFICATION

LOCK-TECH®

ARCHITECTURAL HARDWARE

57-60 OXFORD STREET SWANSEA SA1 3JD

 01792 655680

 01792 462243

 sales@lock-tech.co.uk

 www.lock-tech.co.uk